



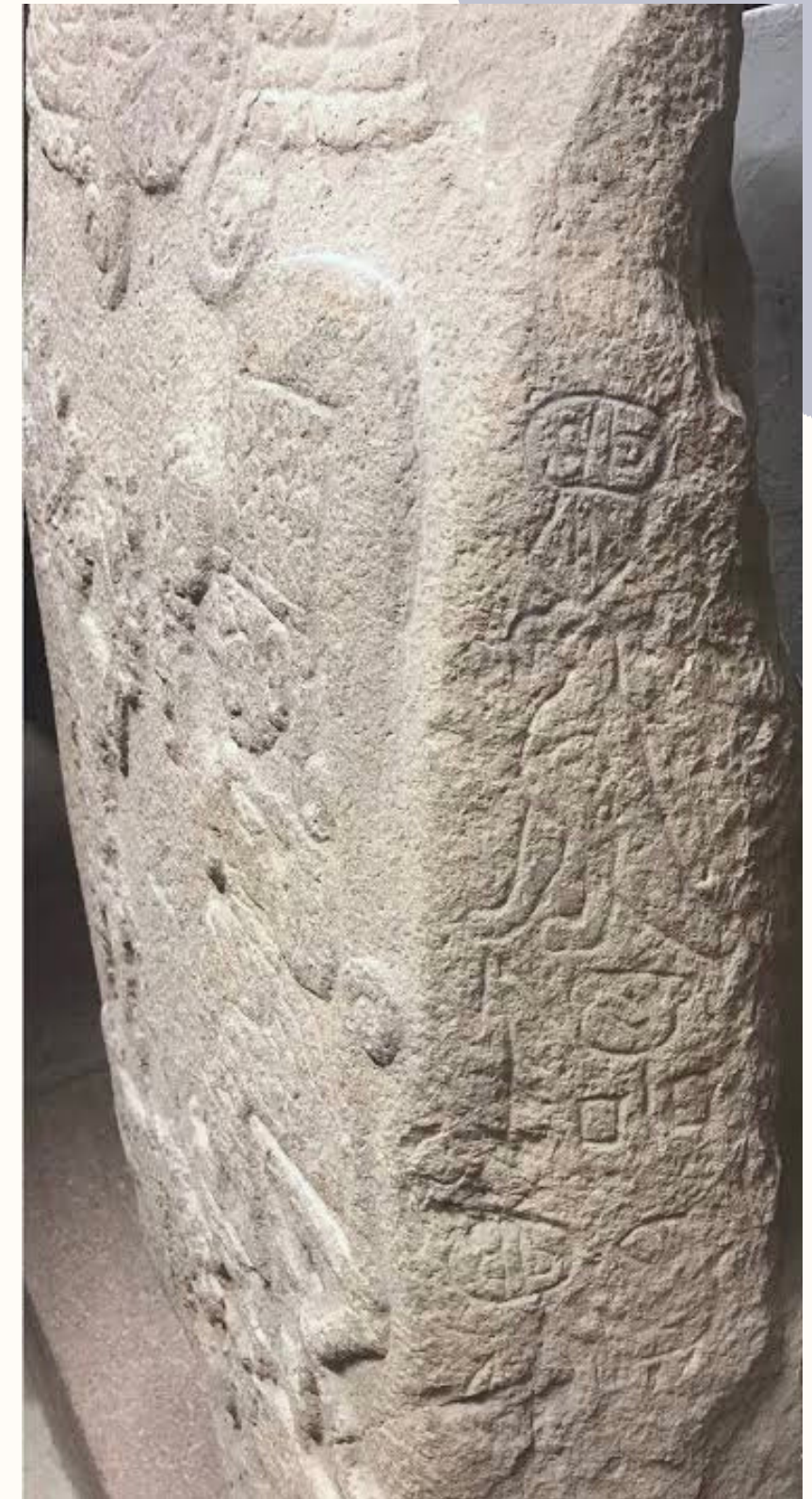
# Malatya City Presentation



Malatya is one of the counties of Turkey and located in the East Anatolia Region. It's the 28th most crowded city of the country.

# A Short History of Malatya

The name Malatya can be seen as Melita in Gültepe mound tablets and as Maldia in Hittite tablets. It's believed that this name is derived from the word "merid" which means honey in Hittite language.



# Where To Visit In Malatya

There are lots of Ottoman and Seljuk antique works in Malatya. Its natural beauty is also a must to see.

# Aslantepe Archeological Site

It's located in 7 kilometres northeast of Malatya, near the west side of Fırat river. Its history dates back to 5.000 BC.

The first digs in the site were made by a French team in the 1930s. But then there wasn't a museum in Malatya so the founded stuff had to be taken to Ankara to be shown in Ankara Anatolian Civilizations Museum.







# Levent Valley

It's mostly likened to the Grand Canyon in the USA and it has a history of 65 million years. It's located in Akçadağ province of Malatya and is visited by local and international tourists all year long.[sen](http://long.sen)









# Şire Bazaar

It's a flea market located in the centre of the city.







# Battalgazi Ulu Mosque

It's located in Battalgazi province and was constructed in 1224 during the reign of Alaaddin Keykubat, the sultan of Seljuks.







# Malatya Archeology Museum

You can visit the museum each day from 8am to 4:45pm and see history through different civilizations.





